



# Table of Contents

Results .....	2
Saturday 9/6.....	3
Scheduled Matches – Boys .....	3
Scheduled Matches – Girls .....	3
Transport for Matches.....	6
Catering and Transport .....	7
The Finals .....	8
Medal Ceremony .....	8
Closing Ceremony & Farewell Party.....	8
Departure from Closing Ceremony .....	9
Dinner.....	9
Check-out and Departure.....	10

# Results

## Results – Boys

### Group 1 TO 4

SRB–TUR 0:2 (25:27, 15:25)

ISR–GER 0:2 (9:25, 17:25)

### Group 5 TO 8

FRA–ITA 0:2 (17:25, 19:25)

BUL–TPE 0:2 (11:25, 21:25)

### Group 9 TO 12

CZE–POL 0:2 (23:25, 23:25)

LAT–GRE 0:2 (19:25, 21:25)

### Group 13 TO 16

HUN–SVK 2:0 (27:25, 25:20)

GEO–BRA 0:2 (15:25, 19:25)

### Group 17 TO 20

CHN–DEN 2:1 (25:14, 21:25, 28:26)

CYP–CHI 2:0 (26:24, 26:24)

### Group 21 TO 24

CRO–BEL 0:2 (15:25, 23:25)

AUT–POR 2:0 (25:19, 25:20)

### Group 25 TO 27

LUX–EST 0:2 (10:25, 19:25)

## Results – Girls

### Group 1 TO 4

TUR–SRB 1:2 (25:19, 19:25, 21:25)

GER–BRA 2:1 (25:22, 20:25, 25:18)

### Group 5 TO 8

CZE–SVK 2:0 (25:18, 25:17)

CHN–GRE 2:0 (32:30, 25:21)

### Group 9 TO 12

CRO–ITA 2:0 (25:19, 25:21)

BUL–POR 2:1 (25:19, 21:25, 25:19)

### Group 13 TO 16

POL–FRA 0:2 (24:26, 27:29)

TPE–CYP 2:0 (25:14, 25:16)

### Group 17 TO 20

AUT–HUN 2:1 (25:21, 20:25, 25:19)

SLO–CHI 0:2 (7:25, 16:25)

### Group 21 TO 24

BEL–NED 1:2 (25:15, 16:25, 17:25)

EST–DEN 0:2 (19:25, 16:25)

### Group 25 TO 28

ISR–LAT 0:2 (18:25, 17:25)

LUX–GEO 0:2 (20:25, 15:25)

# Saturday 9/6

## Scheduled Matches – Boys

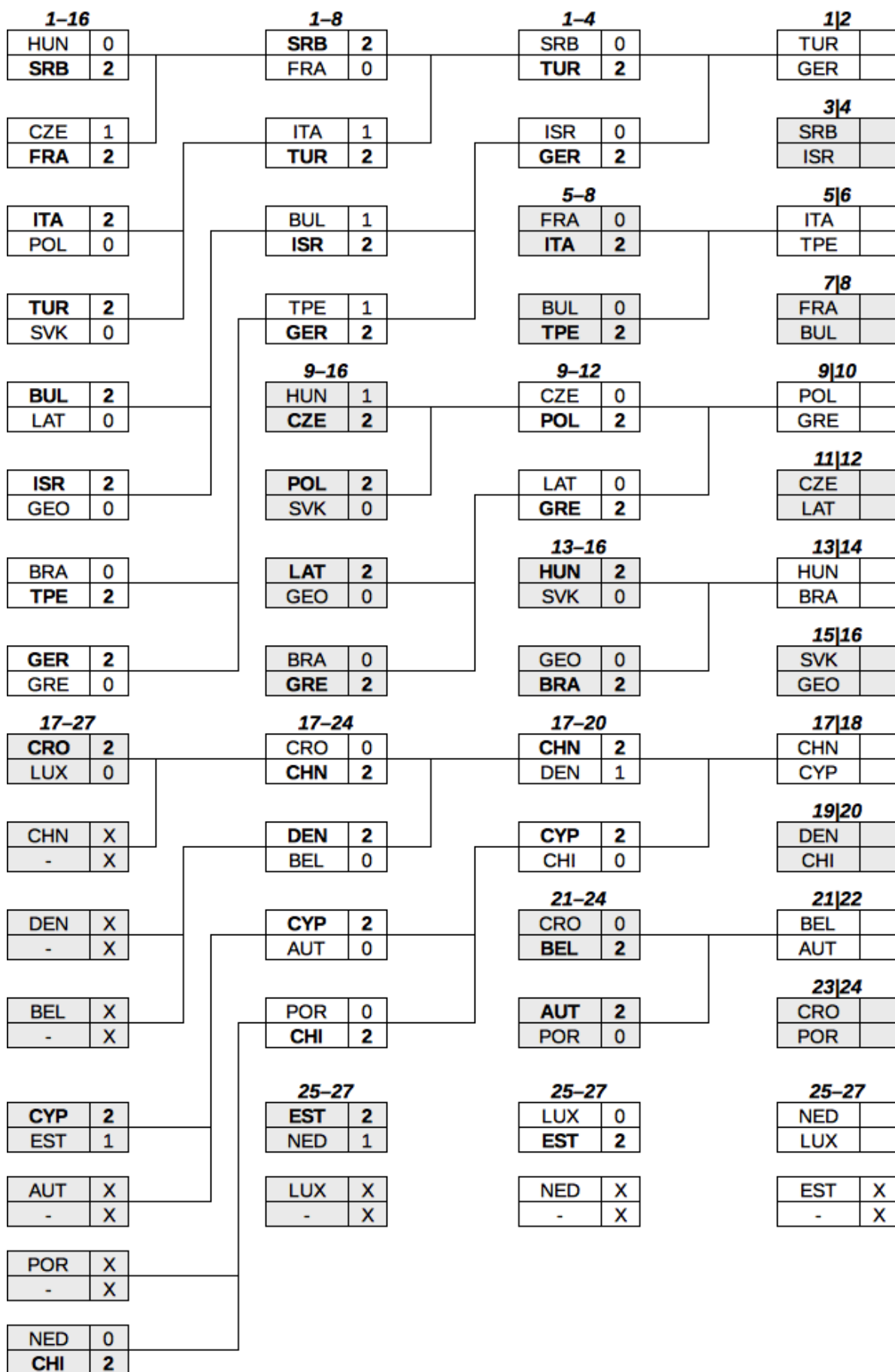
<i>Group</i>	<i>Hall</i>	<i>Time</i>	<i>Team A</i>	<i>Team B</i>
1   2	Vodova New 2	17:00	TUR	GER
3   4	Sokol	11:00	SRB	ISR
5   6	Podolí	11:00	ITA	TPE
7   8	Maloměřice	11:00	FRA	BUL
9   10	Lercha	11:00	POL	GRE
11   12	Tuřany	11:00	CZE	LAT
13   14	TJ Tatran Bohunice	11:00	HUN	BRA
15   16	Tuřany	9:00	SVK	GEO
17   18	Podolí	9:00	CHN	CYP
19   20	Maloměřice	9:00	DEN	CHI
21   22	Lercha	9:00	BEL	AUT
23   24	Sokol	9:00	CRO	POR
25 TO 27	TJ Tatran Bohunice	9:00	NED	LUX

## Scheduled Matches – Girls

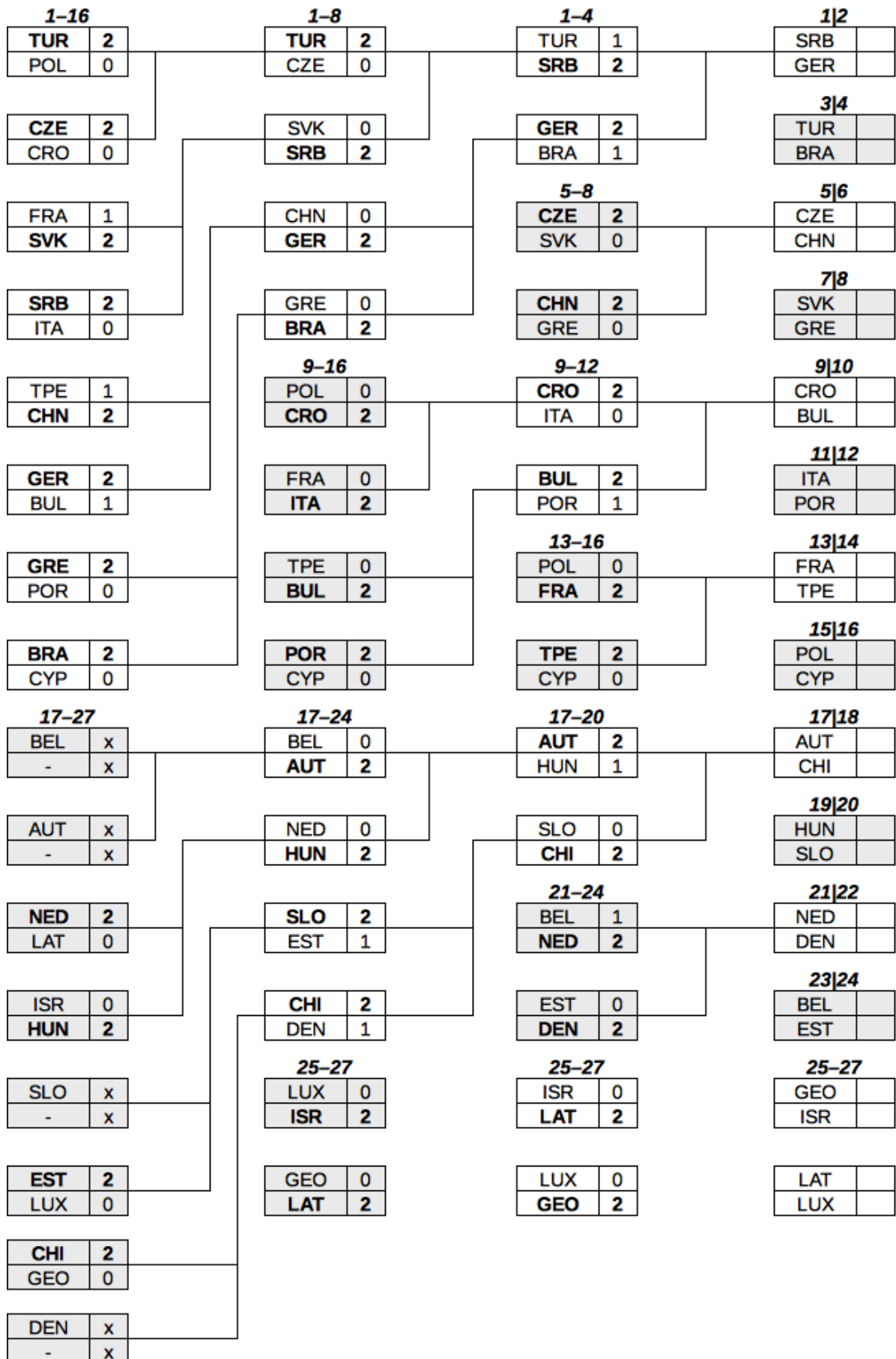
<i>Group</i>	<i>Hall</i>	<i>Time</i>	<i>Team A</i>	<i>Team B</i>
1   2	Vodova New 2	14:30	SRB	GER
3   4	Vodova Old	11:00	TUR	BRA
5   6	Tesla	11:00	CZE	CHN
7   8	VUT Purkyňova 2	11:00	SVK	GRE
9   10	FSpS	11:00	CRO	BUL
11   12	VUT Purkyňova 1	11:00	ITA	POR
13   14	Ludvíka Daňka	11:00	FRA	TPE
15   16	Ludvíka Daňka	9:00	POL	CYP
17   18	VUT Purkyňova 2	9:00	AUT	CHI
19   20	FSpS	9:00	HUN	SLO
21   22	VUT Purkyňova 1	9:00	NED	DEN
23   24	Vodova Old	9:00	BEL	EST
25 TO 28	Tesla	9:00	GEO	ISR
25 TO 28	Vodova New 2	9:00	LAT	LUX

Please note that both final and bronze medal matches – boys and girls – are played best of 5 sets. The rest of the Saturday matches are played best of 3 sets.

# Boys



# Girls



# Transport for Matches

Country	Team	Departure for match			Departure from match		
		Time	Stop	Line	Time	Stop	Line
AUT	Boys	07:15	Sportovní	Bus P77	10:30	GML	Bus P77
	Girls	07:15	Sportovní	Bus P43	10:30	Červinkova	Bus P43
BEL	Boys	07:00	Santon	Bus P77	10:30	GML	Bus P77
	Girls	07:00	Santon	Bus P71	10:30	Červinkova	Bus P71
BRA	Boys	09:15	Sportovní	Bus P73	12:15	Tatran	Bus P73
	Girls	09:15	Sportovní	Bus P71	13:00	Červinkova	Bus P71
BUL	Boys	09:15	Sportovní	Bus P41	12:15	Maloměřice	Bus P41
	Girls	09:15	Sportovní	Bus P74	12:15	Kampus	Bus P74
CHI	Boys	07:15	Sportovní	Bus P41	10:30	Maloměřice	Bus P41
	Girls	07:15	Sportovní	Bus P43	10:30	Červinkova	Bus P43
CHN	Boys	07:10	Continental	Bus P45	10:30	Podolí	Bus P45
	Girls	09:15	Continental	Bus P70	12:15	Tesla	Bus P70
CRO	Boys	07:15	Sportovní	Bus P78	10:30	Kounicova	Bus P78
	Girls	09:15	Sportovní	Bus P74	12:15	Kampus	Bus P74
CYP	Boys	07:15	Sportovní	Bus P45	10:30	Podolí	Bus P45
	Girls	07:15	Sportovní	Bus P75	10:30	Botanická	Bus P75
CZE	Boys	09:15	Continental	Bus P42	12:15	Tuřany	Bus P42
	Girls	09:15	Continental	Bus P70	12:15	Tesla	Bus P70
DEN	Boys	07:15	Sportovní	Bus P41	10:30	Maloměřice	Bus P41
	Girls	07:15	Sportovní	Bus P72	10:30	Červinkova	Bus P72
EST	Boys	–	no match	–	–	no match	–
	Girls	07:00	Santon	Bus P71	10:30	Červinkova	Bus P71
FRA	Boys	09:10	Continental	Bus P41	12:15	Maloměřice	Bus P41
	Girls	09:15	Continental	Bus P75	12:15	Botanická	Bus P75
GEO	Boys	07:00	Santon	Bus P42	10:30	Tuřany	Bus P42
	Girls	07:00	Santon	Bus P70	10:30	Tesla	Bus P70
GER	Boys	15:00	Continental	Bus P40	–	–	–
	Girls	12:30	Continental	Bus P40	–	–	–
GRE	Boys	09:15	Continental	Bus P77	12:15	GML	Bus P77
	Girls	09:15	Continental	Bus P43	12:15	Červinkova	Bus P43
HUN	Boys	09:00	Santon	Bus P73	12:15	Tatran	Bus P73
	Girls	07:00	Santon	Bus P74	10:30	Kampus	Bus P74
ISR	Boys	09:15	Sportovní	Bus P78	13:00	Kounicova	Bus P78
	Girls	07:15	Sportovní	Bus P70	10:30	Tesla	Bus P70
ITA	Boys	09:10	Sportovní	Bus P45	12:15	Podolí	Bus P45
	Girls	09:15	Sportovní	Bus P72	12:15	Červinkova	Bus P72
LAT	Boys	09:15	Continental	Bus P42	12:15	Tuřany	Bus P42
	Girls	07:10	Continental	Bus P79	10:30	Červinkova	Bus P79
LUX	Boys	07:15	Sportovní	Bus P73	10:30	Tatran	Bus P73
	Girls	07:15	Sportovní	Bus P79	10:30	Červinkova	Bus P79
NED	Boys	07:15	Sportovní	Bus P73	10:30	Tatran	Bus P73
	Girls	07:15	Sportovní	Bus P72	10:30	Červinkova	Bus P72
POL	Boys	09:00	Santon	Bus P77	12:15	GML	Bus P77
	Girls	07:00	Santon	Bus P75	10:30	Botanická	Bus P75
POR	Boys	07:15	Sportovní	Bus P78	10:30	Kounicova	Bus P78
	Girls	09:15	Sportovní	Bus P72	12:15	Červinkova	Bus P72
SLO	Girls	07:15	Sportovní	Bus P74	10:30	Kampus	Bus P74
SRB	Boys	09:15	Sportovní	Bus P78	13:00	Kounicova	Bus P78
	Girls	12:35	Sportovní	Bus P40	–	–	–
SVK	Boys	07:15	Continental	Bus P42	10:30	Tuřany	Bus P42
	Girls	09:15	Continental	Bus P43	12:15	Červinkova	Bus P43
TPE	Boys	09:10	Continental	Bus P45	12:15	Podolí	Bus P45
	Girls	09:15	Continental	Bus P75	12:15	Botanická	Bus P75
TUR	Boys	15:05	Sportovní	Bus P40	–	–	–
	Girls	09:15	Sportovní	Bus P71	13:00	Červinkova	Bus P71

## Catering and Transport

After the morning matches, teams will be transported to their hotels. The finalists (German boys and girls, Turkish boys, Serbian girls) will lunch at their hotels. Same goes for those staying at Santon Hotel.

Other teams will lunch at Menza Canteen VUT Purkyňova – see the catering schedule:

Country	Team	Transport for Lunch			Lunch	
		Time	Bus Stop	Bus Line	Time	Place
AUT	Boys	12:00	Sportovní	Bus B	12:20	Menza VUT Purkyňova
	Girls	12:00	Sportovní	Bus B	12:20	Menza VUT Purkyňova
BEL	Boys	–	–	–	12:00	Santon Hotel
	Girls	–	–	–	12:00	Santon Hotel
BRA	Boys	14:05	Sportovní	Bus F	14:20	Menza VUT Purkyňova
	Girls	14:30	Sportovní	Bus G	14:45	Menza VUT Purkyňova
BUL	Boys	13:50	Sportovní	Bus D	14:10	Menza VUT Purkyňova
	Girls	13:50	Sportovní	Bus D	14:10	Menza VUT Purkyňova
CHI	Boys	11:50	Sportovní	Bus A	12:10	Menza VUT Purkyňova
	Girls	11:50	Sportovní	Bus A	12:10	Menza VUT Purkyňova
CHN	Boys	13:15	Continental	Bus E	13:35	Menza VUT Purkyňova
	Girls	13:15	Continental	Bus E	13:35	Menza VUT Purkyňova
CRO	Boys	12:30	Sportovní	Bus B	12:45	Menza VUT Purkyňova
	Girls	13:45	Sportovní	Bus C	14:10	Menza VUT Purkyňova
CYP	Boys	11:50	Sportovní	Bus A	12:10	Menza VUT Purkyňova
	Girls	11:50	Sportovní	Bus A	12:10	Menza VUT Purkyňova
CZE	Boys	13:45	Continental	Bus E	14:00	Menza VUT Purkyňova
	Girls	13:45	Continental	Bus E	14:00	Menza VUT Purkyňova
DEN	Boys	12:00	Sportovní	Bus B	12:20	Menza VUT Purkyňova
	Girls	12:00	Sportovní	Bus B	12:20	Menza VUT Purkyňova
EST	Boys	–	–	–	12:15	Santon Hotel
	Girls	–	–	–	12:15	Santon Hotel
FRA	Boys	13:45	Continental	Bus E	14:00	Menza VUT Purkyňova
	Girls	13:45	Continental	Bus E	14:00	Menza VUT Purkyňova
GEO	Boys	–	–	–	12:30	Santon Hotel
	Girls	–	–	–	12:30	Santon Hotel
GER	Boys	–	–	–	13:00	Continental Hotel
	Girls	–	–	–	11:30	Continental Hotel
GRE	Boys	13:30	Continental	Bus F	13:50	Menza VUT Purkyňova
	Girls	13:30	Continental	Bus F	13:50	Menza VUT Purkyňova
HUN	Boys	–	–	–	13:10	Santon Hotel
	Girls	–	–	–	12:30	Santon Hotel
ISR	Boys	14:40	Sportovní	Bus D	15:00	Menza VUT Purkyňova
	Girls	12:30	Sportovní	Bus B	12:50	Menza VUT Purkyňova
ITA	Boys	13:45	Sportovní	Bus C	14:00	Menza VUT Purkyňova
	Girls	13:45	Sportovní	Bus C	14:00	Menza VUT Purkyňova
LAT	Boys	14:00	Continental	Bus F	14:20	Menza VUT Purkyňova
	Girls	13:30	Continental	Bus F	13:45	Menza VUT Purkyňova
LUX	Boys	12:15	Sportovní	Bus A	12:35	Menza VUT Purkyňova
	Girls	12:15	Sportovní	Bus A	12:35	Menza VUT Purkyňova
NED	Boys	12:15	Sportovní	Bus A	12:40	Menza VUT Purkyňova
	Girls	12:15	Sportovní	Bus A	12:40	Menza VUT Purkyňova
POL	Boys	–	–	–	13:10	Santon Hotel
	Girls	–	–	–	12:30	Santon Hotel
POR	Boys	12:30	Sportovní	Bus B	12:45	Menza VUT Purkyňova
	Girls	13:45	Sportovní	Bus C	14:10	Menza VUT Purkyňova
SLO	Girls	12:30	Sportovní	Bus B	12:50	Menza VUT Purkyňova
SRB	Boys	14:40	Sportovní	Bus D	15:00	Menza VUT Purkyňova
	Girls	–	–	–	11:30	Boby Hotel



Country	Team	Transport for Lunch			Lunch	
		Time	Bus Stop	Bus Line	Time	Place
SVK	Boys	13:15	Continental	Bus E	13:35	Menza VUT Purkyňova
	Girls	13:15	Continental	Bus E	13:35	Menza VUT Purkyňova
TPE	Boys	14:00	Continental	Bus F	14:20	Menza VUT Purkyňova
	Girls	14:00	Continental	Bus F	14:20	Menza VUT Purkyňova
TUR	Boys	–	–	–	13:00	Boby Hotel
	Girls	14:30	Sportovní	Bus G	14:45	Menza VUT Purkyňova

After lunch at the canteen VUT Purkyňova they will walk to Vodova New Hall to watch the finals. The finalists will be taken there by special buses (see *Transport for Matches* at page 6). **Teams from Santon Hotel will take a special tram line P from Rakovecká terminal stop at 13:55.**

## The Finals

Both final matches will take place at Vodova New Hall. All teams are expected to watch the finals.

14:30 – Girls Final

approx. 17:00 – Boys Final

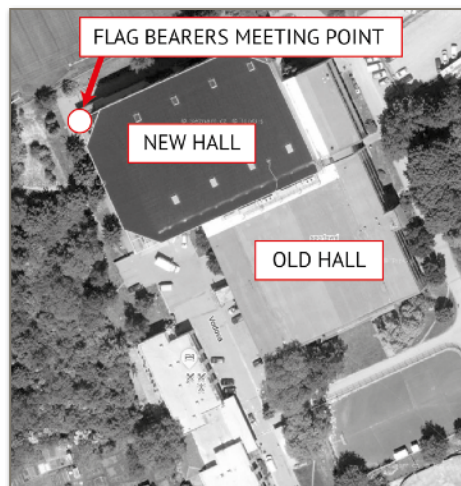
*(exact time depends on the length of the previous match)*

## Medal Ceremony

All the medalists (gold, silver, bronze – both girl and boy teams) will be decorated right after the boys' finals. After the finals and medal ceremony, a closing ceremony follows.

## Closing Ceremony & Farewell Party

Everyone is expected to attend the ceremony. Czech guides, dressed in the blue jersey, will be appointed as flag bearers. Immediately after the medal ceremony, all flag bearers are to meet Ms. Šárka Malá at the designated spot outside Vodova New Hall in the north-west corner (see the picture).



## Departure from Closing Ceremony

Teams from **Santon Hotel** will go by a special **tram line P** from the terminal stop Červinkova – Belgium Flanders, Estonia, Georgia, Hungary and Poland.

Teams staying at **Boby** and **Avanti** will take special buses from Vodova stop.

Bus P52	Austria, Brazil, Bulgaria
Bus P53	Chile, Croatia, Cyprus
Bus P54	Denmark, Israel, Italy
Bus P55	Luxembourg, Netherlands, Portugal
Bus P51	Serbia, Slovenia, Turkey

Because of the fireworks display there are not enough available buses to transport all the participants in one go. The special buses have to take the 1<sup>st</sup> group to their hotels (Boby, Avanti) and after that can return to pick up the teams from **Continental Hotel**, approx. 30 min later. If you prefer, feel free to use public transport (tram no. 12). Keep in touch with your guides for further details.

Bus P51	China, Chinese Taipei
Bus P52	France, Germany, Greece
Bus P53	Slovakia, Latvia, Czech Republic

## Dinner

All teams have late dinners prepared at their hotels after the Closing Ceremony.

# Check-out and Departure

All participants should empty their rooms at least one hour before their scheduled departure from Brno. The hotel staff will check the rooms – please remember that any damage to the hotel property must be paid for. Check-out from all hotels is by 11 a. m. on both days! Each hotel provides space to store the luggage.

Pay attention to the departure details in the table. Be ready to load and board the shuttle bus on time.

<i>Country</i>	<i>Day</i>	<i>Departure Time from Hotel</i>	<i>Airport / Station</i>	<i>Transport</i>	<i>Departure Time</i>
GRE Boys	10/6	<b>6:00</b>	Vienna	plane	10:20
TPE	10/6	<b>6:00</b>	Vienna	plane	11:35
GER Girls	10/6	<b>6:45</b>	Brno Main Station	train	7:20
FRA	10/6	<b>7:30</b>	Prague	own bus	12:25
BEL	10/6	<b>7:45</b>	Prague	plane	17:40
POL Boys	10/6	<b>8:00</b>	–	own bus	–
BRA	10/6	<b>8:30</b>	Prague	plane	15:55
AUT	10/6	<b>8:30</b>	Brno Main Station	train	9:23
CHN	10/6	<b>9:00</b>	Vienna	plane	13:15
SVK	10/6	<b>9:00</b>	–	own bus	–
DEN	10/6	<b>9:30</b>	Prague	plane	14:45
TUR	10/6	<b>9:30</b>	Prague	plane	14:30
CHI	10/6	<b>10:00</b>	Vienna	plane	15:05
LAT	10/6	<b>10:00</b>	–	own bus	–
SRB	10/6	<b>10:00</b>	–	own bus	–
GER Boys	10/6	<b>10:45</b>	Brno Main Station	train	11:38
HUN Boys	10/6	<b>10:45</b>	Grand Bus Station	bus	11:40
ITA	10/6	<b>10:45</b>	Prague	plane	16:40
BUL	10/6	<b>11:00</b>	Vienna	plane	17:35
GRE Girls	10/6	<b>11:00</b>	Vienna	plane	17:00
EST	10/6	<b>14:00</b>	–	own bus	–
ISR	10/6	<b>15:00</b>	Vienna	plane	20:30
CYP	10/6	<b>16:00</b>	Vienna	plane	20:35
GEO	10/6	<b>16:00</b>	Vienna	plane	20:00
CZE	–	–	–	–	–
NED	10/6	<b>9:00</b>	–	own bus	–
CRO	9/6	<b>evening</b>	–	own bus	–
LUX	9/6	<b>evening</b>	–	own bus	–
HUN Girls	10/6	<b>after breakfast</b>	–	own bus	–
SLO	10/6	<b>after breakfast</b>	–	own cars	–
POL Girls	9/6	<b>evening</b>	–	own bus	–
POR	10/6	<b>own bus morning</b>	Prague	plane	19:05

## Partneři a sponzoři:

